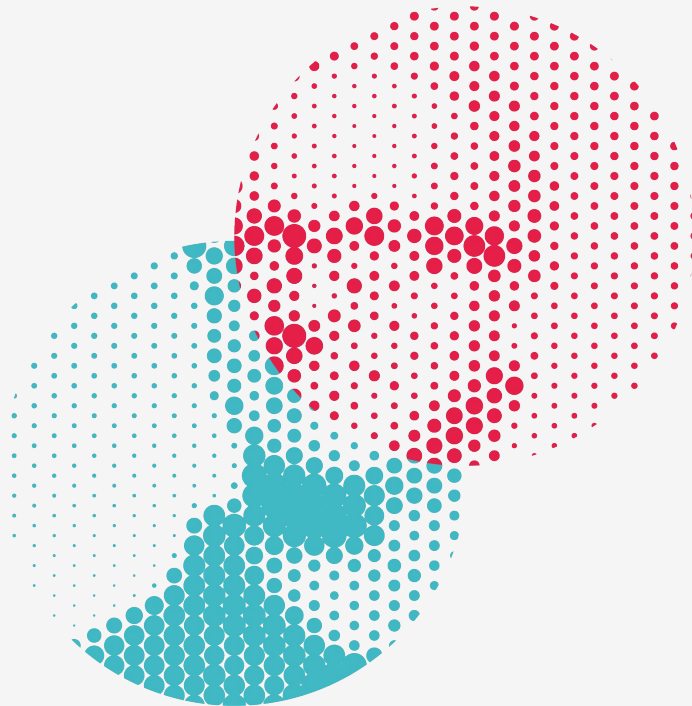
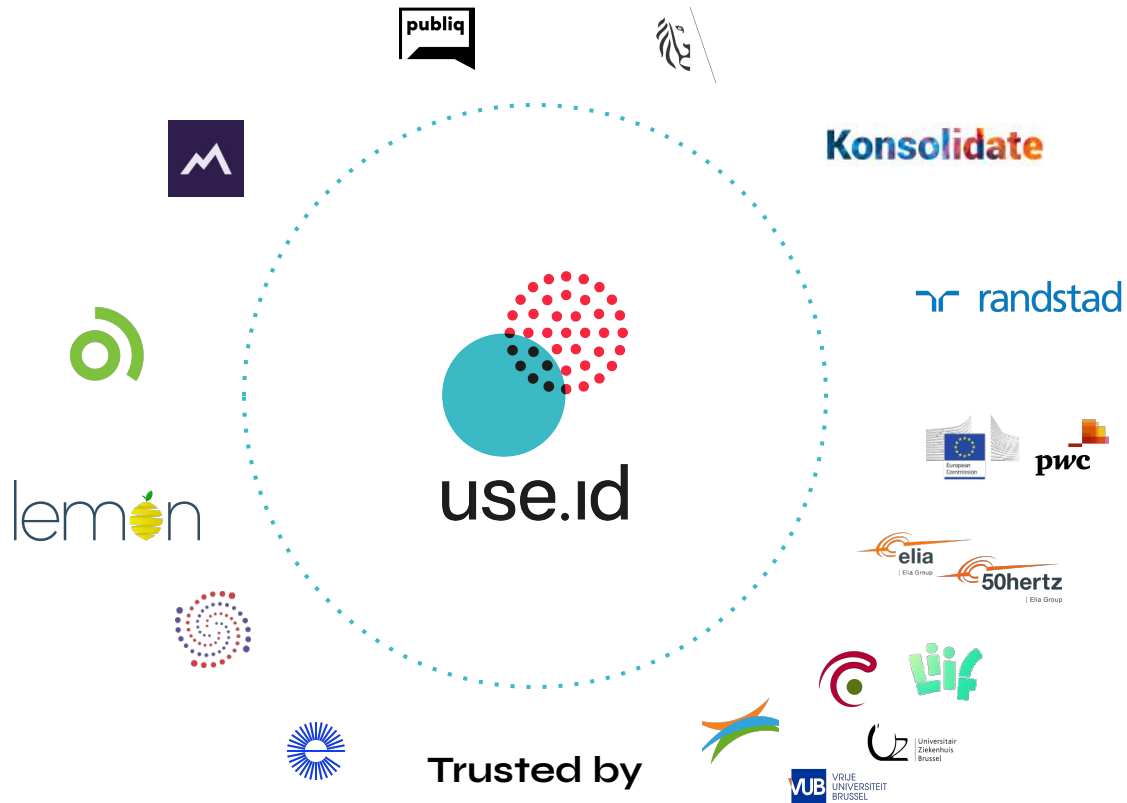


Enabling people & organizations to share data without concerns

- Founded in 2018 and 4+ years experience with Solid
- Team of 10 FTE, excluding the advisory board.
- Customers include start-ups, corporates & public sector
- Our main product: use.id





Easily re-use data with use.id

use.id is a turnkey solution that allows platforms & apps to re-use medical data to the benefit of patients and care providers. Unlike other solutions, use.id relies on open standards to be interoperable & future proof.



Data storage



Single sign-on



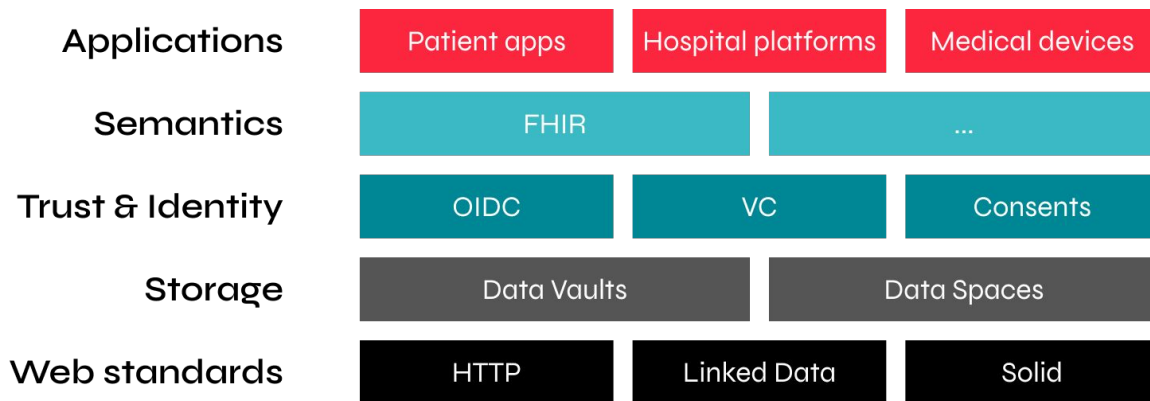
Interoperable



Developer friendly

Easily re-use data with use.id

use.id relies on robust, open technologies



Break down **barriers** to **re-use** **medical data**

Often medical data is stored in silos, which makes it hard to re-use. Breaking down these silos allows you to create more value from your data.

1

Be interoperable with others

2

Comply with regulations such as the EHDS

3

Offer a patient-centric experience

Break down **barriers** to re-use **medical data**

Patient care improves when medical data can flow



Patient

Act on your medical data and digitally share it with care providers by using your favourite apps.



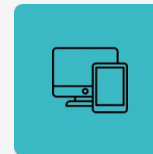
Care provider

Get a 360° view on your patient's medical data by combining data from authentic sources, care providers, and patients.



Researcher

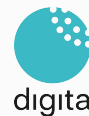
Gain insight into anonymised data across patients and care providers.



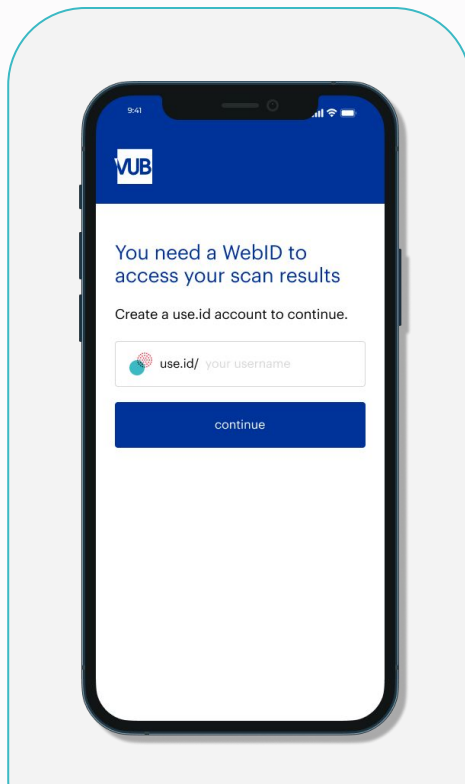
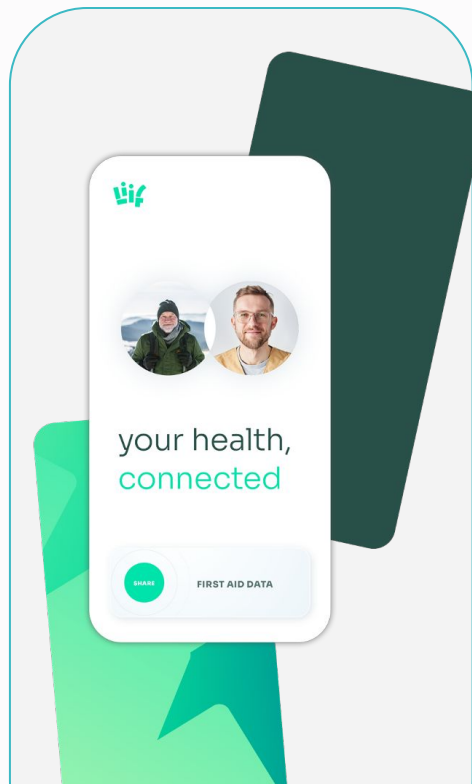
Platforms & apps

Facilitate re-use of medical data across the healthcare sector to offer a patient-centric onboarding and generate new insights.

Solid in healthcare



Some applications



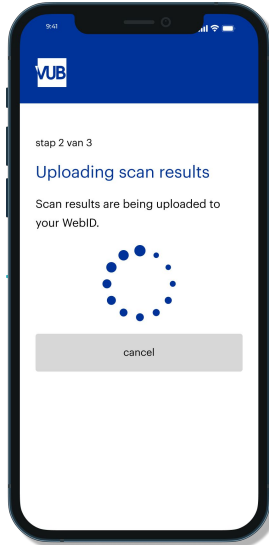


use.id



Break down **barriers** to re-use **medical data**

Data for Alzheimer research



Fight dementia by re-using medical imaging data

- Researcher shares MEG Scan results with the patient.
- Patients ask for a second opinion by sharing their data.
- Patients participate in other studies by sharing their data.
- Patients are more involved in the project.



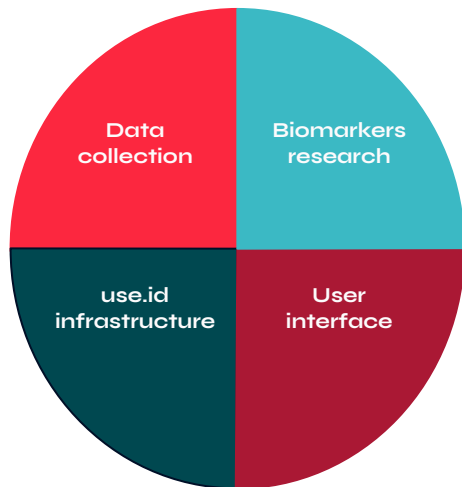


use.id



Break down **barriers** to re-use **medical data**

Data for Alzheimer research



(1) to develop novel biomarkers of AD

(2) to translate those biomarkers to MEG and to leverage the unique capacity to detect as a potential precursor, and

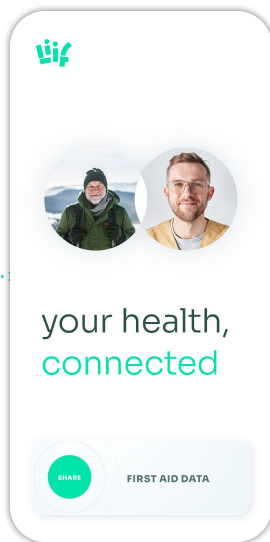
(3) to enable access and establish a patient community through **personalised data vaults**.

Combined, these three goals will enable **long-term follow-up** of patients in the earliest stages of AD. Such a long-term follow-up is crucial to define the possibly subtle electrophysiological fingerprint of AD disease in the earliest stages, correctly diagnose AD, and develop novel therapeutic strategies that must be introduced at the earliest stage of the disease.



Break down **barriers** to re-use **medical data**

A patient centric health app



The patient's companion app

- Patients can give caregiver access to their medical data.
- Works in Belgium and abroad.

Break down **barriers** to re-use **medical data**

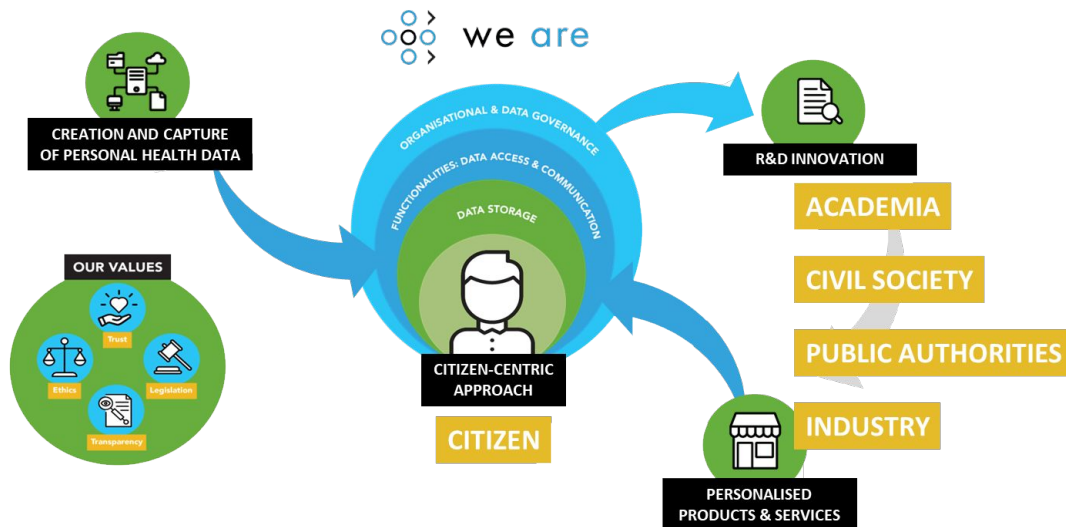
A patient centric health app

- A personal health record in your hands
- Encoded data
 - ICD and ICPC for medical data
 - ATC/DDD for pharmaceutical data
- Multiple tools (symptom checker, interaction checker, MEDREM, ...)
- Shareable with care providers



Break down **barriers** to re-use **medical data**

The We Are ecosystem



Break down **barriers** to re-use **medical data**

The We Are ecosystem & use.id



Break down **barriers** to re-use **medical data**

Other noteworthy initiatives

- Vlaams Patiëntenplatform
- Faqir
- Mijngezondheid.be
- NHS
- ...

Questions

